



8 Staysail Crescent Clear Island Waters QLD

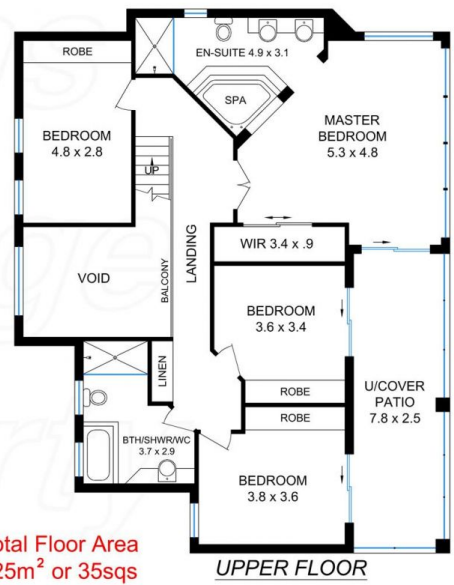
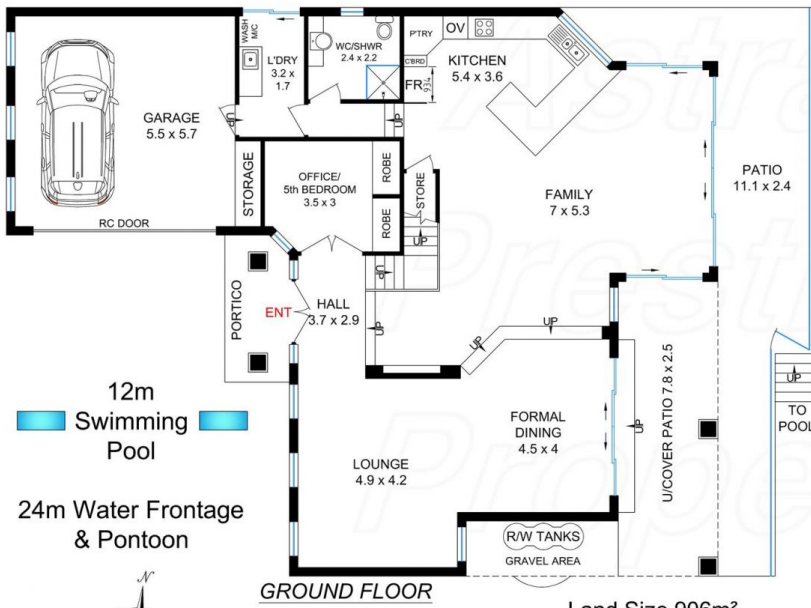
4 3 2

East on wide water. Has views of Broadbeach and Surfers Paradise with night-lights in the distance, location is so central to everywhere. Beaches only 10 minutes away.

The Moorings which is exclusive residential premier properties. Well sought after with local, interstate and overseas buyers flocking to have a central homes close to Bond University, Robina Town centre, Suncorp Stadium, Beautiful Parklands, Elite schools, 45 minute drive to Brisbane CBD, 30 minutes to Coolangatta Airport and easy Motorway access.

This Grand two storey home has been well maintained and immaculately portrayed with the owners wanting to downsize but have loved every minute in this home. A pro fusion of natural light throughout the home and wonderful breezes throughout.

Price : \$ 1,420,000
Land Size : 906 sqm
View : <https://www.astras.com.au/sale/qld/gold-coast/clear-island-waters/residential/house/6284227>

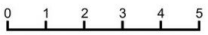


12m Swimming Pool

24m Water Frontage & Pontoon



Floor Plan 1 of 2



Gold Coast Floor Plans
Scale in Meters, Dimensions are approximate, Whilst every care has been made we cannot guarantee its 100% accuracy and interested persons should rely on their own enquiries



Energy Efficient Home with 1.5kw Solar Power System

Land Size 906m²

Ceiling Height 2.4m - 5.4m

8 STAYSAIL CRESCENT,
CLEAR ISLAND WATERS 4226



Total Floor Area 325m² or 35sq

Int'l Gr Fl Area 165m²
Int'l Upper Fl Area 113.7m²
Combined 278.7m² or 30sq

U/Cover Patio Areas 40m²
Portico 6.3m²
Patio Area 35.1m²
Pool Area 108.8m²