

17 Earle Court Tallai QLD

4 3 2

Nestled in the Gold Coast hinterland and in one of Tallai's most exclusive streets, is this immaculately presented, 4 bedroom 3 bathroom, architecturally designed steel framed home.

60 squares of open plan living, it is in a class of its' own! You can live, relax and entertain in total privacy with only the songs of native birds to disturb your contemplation.

The elevation and north-easterly aspect provide 180 degree panoramic views of the Gold Coasts city skyline, from Surfers Paradise to Burleigh Heads. Breathtakingly beautiful by day and picture perfect by night.

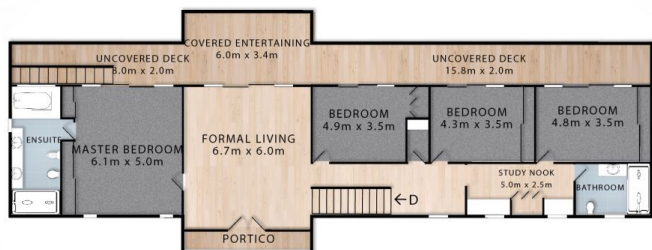
This executive family residence, on 4430 sqm of lush manicured grounds in the gorgeous Tallai Hills, boasts an array of special features:

Price : \$ 1,300,000
Building Size : 557 sqm
Land Size : 4430 sqm
View : <https://www.astras.com.au/sale/qld/gold-coast/tallai/residential/house/6284264>

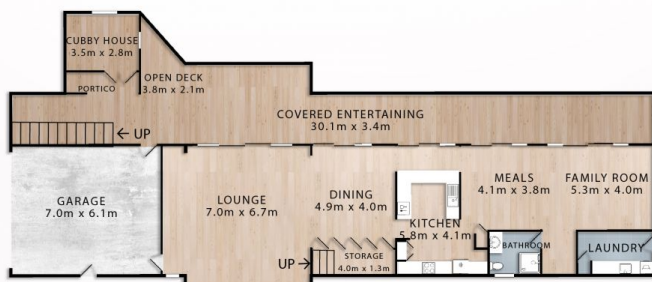


Christine Demchenko
07 5593 2038

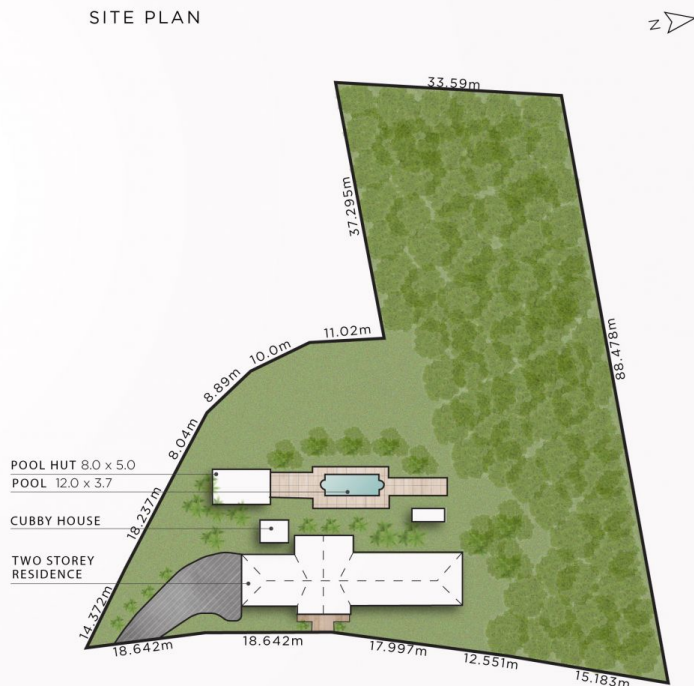
ENTRY LEVEL



LOWER LEVEL



SITE PLAN



17 Earle Court
TALLAI

4 Bedrooms

3 Bathrooms

2 Car Garage

Block Size 4,430m²
TOTAL FLOOR AREA
570m² or 61 Squares

Christine Demchenko | 0414 798 759

astras prestige property

Whilst every attempt has been made to ensure the accuracy of the floor plan contained here, measurements of doors, windows, rooms and any other items are approximate and no responsibility is taken for error, omission or mis-statement. This plan is for illustrative purposes only and should only be used as such by any prospective purchaser. The services systems and appliances shown have not been tested and no guarantee as to their operability or efficiency can be given.